

Advertise Your Special Events In The City of Sedgwick

**We will post your Special Events
on the City's Cable Channel,
Facebook & Website.**

Email your information to

court@cityofsedgwick.org

or drop it off at Sedgwick City Hall!

**CITY HALL LOBBY IS NOW
CLOSED TO THE PUBLIC**

**BILLS MAY BE PAID ONLINE
cityofsedgwick.org OR DROP
BOX (BLACK BOX ON NORTH
OF DRIVE)**

**CITY STAFF ARE AVAILABLE BY
PHONE AT 316-772-5151
IF NEEDED.**

FORMS ARE ON THE WEBSITE.

Rental assistance available for Kansans impacted by COVID

The Kansas Eviction Prevention Program (KEPP) serves both tenants and landlords who have fallen behind on rent due to the COVID pandemic. (Up to 9 months not to exceed \$5000 per tenant.)

APPLY NOW

<https://kshousingcorp.org/eviction-prevention-program/>

**COUNCIL MEETING ATTENDANCE
IS RESTRICTED and can be viewed
VIA FACEBOOK LIVE.**

**IF YOU HAVE
QUESTIONS/COMMENTS FOR THE
COUNCIL, PLEASE CONTACT CITY
HALL BY NOON THE DAY OF THE
MEETING.**

Message from Waste Connections:



WASTE CONNECTIONS, INC.

In the event that our employees experience COVID or need quarantined, we may experience a staffing shortage. This may result in delays in trash/recycle pick up. We encourage residents to refer to our local website www.wasteconnectionswichita.com to view alerts on delays. For your safety and ours, please continue to bag all trash. If trash is delayed, please leave out by curb and we will run through Saturday.

**Kansas has earmarked \$35
million of Cares Act
Funding for the Kansas
Eviction Prevention
Program. For more
information follow this link:
<https://kshousingcorp.org/>**



Council meets

Regular Council Meetings

1st & 3rd Mondays

Next Meeting

Monday, February 1st, 7:30pm

Council Meeting

Public Welcome!

Sedgwick City Hall

520 N. Commercial

PO Box 131

Sedgwick, KS 67135

Hours: Monday – Friday, 8AM-5PM

Phone: (316)772-5151, Fax: (316)772-5592

www.cityofsedgwick.org

Join us on Facebook – City of Sedgwick, Kansas



Payment Options: Drop Box or Pay Online

www.cityofsedgwick.org

Sign up for **automatic
payments!!**

**No fee for
Utility payments!!**

**CITY HALL HOURS
8AM – 5PM**



Sedgwick Police Department



**For Non-Emergencies Call
(316)416-4056**

Emergencies Call 911



**For any animal control issues,
please call 911 or
316-283-4190
(non-emergency).**

DRUG SEARCH WARRANT

POLICE DEPARTMENT PRESS RELEASE, CITY OF SEDGWICK

JANUARY 18, 2021



On Friday evening, January 15th, 2021, at approximately 5:47 PM, law enforcement officers with the Sedgwick Police Department served a search warrant at a residence located at 206 Hymer Dr, in Sedgwick, KS. The search warrant pertained to the possession of illegal drugs out of this address. During the search, items believed to be marijuana, items related to the cultivation of marijuana, THC products, and related drug paraphernalia were located.

34-year-old Dustin Foster, of Sedgwick, and a 36-year-old female, also of Sedgwick, were detained without incident. Foster was transported to the jail at the Sedgwick County Sheriff's Office for booking. Foster was arrested for possession of marijuana, cultivation of a controlled substance, drug tax stamp not affixed, and drug paraphernalia. The female subject was released at the scene.

DRUG SEARCH WARRANT

POLICE DEPARTMENT PRESS RELEASE, CITY OF SEDGWICK

JANUARY 18, 2021

The investigation into this incident is ongoing at this time. Anyone having information related to this incident, or other crimes, is urged to contact the Sedgwick Police Department (316) 416-4056, or Crime Stoppers at (316) 267-2111. Callers may remain anonymous.

Chief of Police

W. Brian Daily

BRIAN DAILY

CHIEF OF POLICE

CITY OF SEDGWICK

505 N. COMMERCIAL

SEDGWICK, KS 67135

OFFICE 316-416-4056

FAX 316-215-0103



HOUSING AUTHORITY OF THE CITY OF SEDGWICK

WICKRIDGE APARTMENTS

OFFICE HOURS: MONDAYS...8:30AM-3:30PM

CONTACT INFO: OFFICE.....316-772-5354

EMERGENCY CONTACT INFO:

COURTNEY HOLT EXEC DIR.....sedgwickha@gmail.com

RAY HUFF-MAINTENANCE...573-5900

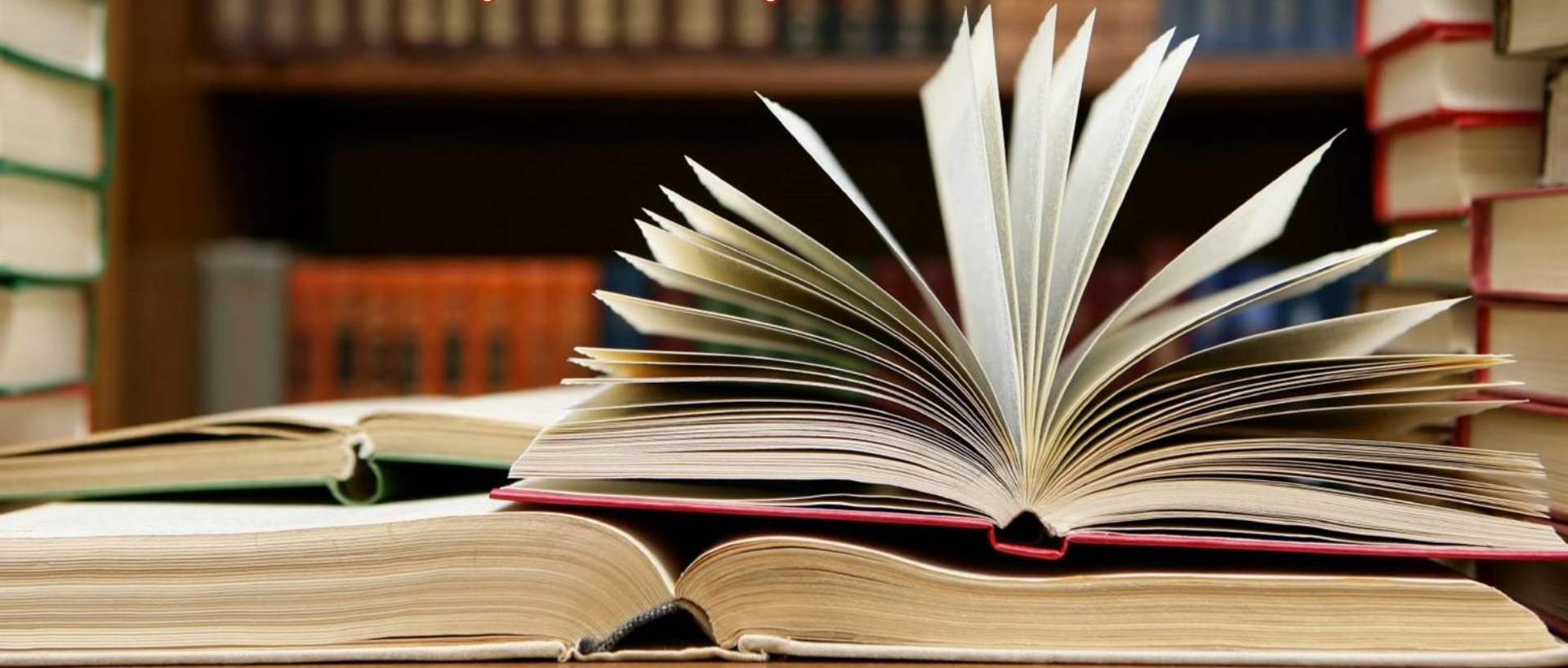
POLICE, FIRE, EMS.....911

EVERGY.....800-401-5666

APPLICATIONS ARE IN OUTSIDE BOX

Thank You

**The Sedgwick Library will be
open regular hours. If you wish,
you may call for a book and
then, pick up. 772-5727**



All Sedgwick Senior Center activities
except lunch are cancelled until further
notice including Tuesday breakfasts.



Blessing Box

(The Lighthouse 5th & Franklin)

6th Grade STEAM Class Mission:
Take what you need and leave
what you can!

The items are for those that need
them. If you have something to
donate, leave it in the box.
Nonperishable food items as well
as hygiene products may be put
in the box.

If box is low, contact
awerth@usd439.com and the
students will refill the box that day
with food drive items!!





**VOLUNTEERS NEEDED
HELP KEEP SEDGWICK
TRADITIONS ALIVE!!**



**SEDGWICK CONNECT (FORMERLY SEDGWICK BOOSTER CLUB) IS
RESPONSIBLE FOR COMMUNITY EVENTS/FUNDRAISERS SUCH AS
THE ANNUAL EASTER EGG HUNT, CHRISTMAS IN THE COUNTRY
AND SEDGWICK FALL FEST**

BUT WE'RE MORE THAN THAT

**OUR MISSION IS TO PROVIDE FUNDS FOR HIGH SCHOOL SCHOLARSHIPS FOR
LOCAL GRADUATING SENIORS GOING TO A TRADE SCHOOL AND FOR
COMMUNITY CHRISTMAS PROVIDING GIFTS, CHRISTMAS DINNER AND
OTHER FOOD ITEMS FOR LOCAL FAMILIES IN NEED.**

BUT WE CANNOT DO IT WITHOUT HELP!!!

IF YOU WANT THESE TRADITIONS TO CONTINUE PLEASE JOIN US AT OUR MONTHLY MEETINGS

THE 3RD TUESDAY OF EVERY MONTH @ THE SENIOR CENTER, 6:30pm

FOR MORE INFORMATION OR OTHER WAYS TO HELP CONTACT RANDI TOLIN, PRESIDENT, AT 316-841-2655

Questions referencing the rental of
FCC of Sedgwick Lighthouse

at 112 W. 5th Street

please email

**No rentals at
this time!**

fccsedgwickoffice@gmail.com

or call 316-772-0211.

If no answer, please leave a message.



PAYMENT DROP BOX

520 NORTH COMMERCIAL

**WE ARE ACCEPTING UTILITY PAYMENTS AT
OUR **DRIVE THRU** DROP BOX
(**NORTH SIDE OF DRIVE INTO PARKING LOT**)
Or online at cityofsedgwick.org**

Thank You



WASTE CONNECTIONS
OF KANSAS INC.
Connect with the Future[®]

SINGLE STREAM CURBSIDE RECYCLING

Waste Connections of Kansas has been providing curbside Single Stream Recycle Service for more than ten (10) years. We are seeing a LARGE amount of contamination at our Recycle Center in South Hutchinson.

Waste Connections of Kansas would like to remind everyone what materials ARE ACCEPTED and the materials that ARE NOT ACCEPTED in your curbside single stream service. One thing to remember is to CLEAN OUT AND RINSE ALL food containers.

ACCEPTED MATERIALS

CORRUGATED CARDBOARD
PLASTICS #1 through #7
CHIP BOARD (cereal/soda/shoe boxes, etc.)
NEWSPAPER / MAGAZINES/JUNK MAIL
OTHER LIGHT-COLORED PAPER
ALUMINUM, STEEL & TIN CANS
CLEAN ALUMINUM FOIL
PHONE BOOKS
GLASS FOOD CONTAINERS (clear, green, etc.)

UNACCEPTABLE MATERIALS

PLASTIC GROCERY AND TRASH BAGS
STYROFOAM
FOOD WASTE
CERAMIC DISHES
ELECTRONICS (E-Waste)
HAZARDOUS HOUSEHOLD WASTE
SHREDDED PAPER
YARD WASTE OR TRASH
LIGHT BULBS, WINDOW GLASS OR MIRRORS

Single Stream Recycling

Recycle these items together



 Newspapers, Magazines, and Mail	 Cardboard	 Cereal & Tissue Boxes	 Glass Bottles & Jars	 Aluminum & Metal Cans	 Plastic Bottles Jugs & Food Containers
Keep Out:					
 Electronics	 Styrofoam	 Plastic Bags	 Food Waste	 Cords & Wires	





YEAR-ROUND LEFTOVER PRESCRIPTION DROPOFF LOCATIONS



COLLECTION SITES



Visit takebackday.dea.gov for location details

CVS Pharmacy

Walgreen's

Professional Pharmacy

Dandurand Drug

McConnell AFB

Sedgwick County Household Hazardous Materials Center
(801 W. Stillwell)

Too often, unused prescription drugs find their way into the wrong hands. That's dangerous and often tragic. That's why it was great to see thousands of folks from across the country clean out their medicine cabinets and turn in - safely and anonymously - a record amount of prescription drugs.

Anonymous



**No grease or wipes
in your pipes!**

**Please help save our pumps
so you can flush!!**

**Blockages in sewers damage our pumps!
To avoid harming City pumps,
please don't flush grease and
flushable wipes down drains/toilets.
Thanks for your help in this matter!!**



SCHEDULE

2021

Jan 14 / Jan 28 /

Feb 11 / Feb 25 / Mar 11 / Mar 25 /

Apr 8 / Apr 22 / May 6 / May 20 / Jun 3 /

Jun 17 / Jul 1 / Jul 15 / Jul 29 / Aug 12 /

Aug 26 / Sept 9 / Sept 23 / Oct 7 / Oct 21 /

Nov 4 / Nov 18 / Dec 2 / Dec 16 /

Dec 30

**Requests or Inquiries about trash/recycling carts
MUST be directed to City Hall – 772-5151**



A fee of \$25 will be charged to make a change of trash container size

**REMINDER: All Trash/Recycle Containers MUST BE
REMOVED from curb by **6am** Friday morning,
day after pick up.**

DO NOT put yard debris in trash bins...use burn site.



Public Notice

When setting your trash cart at the curb for pickup, please leave a 3-foot distance from your trash cart and other objects. ~ Waste Connections



City Ordinance 729

**Prohibits open burning
Within the city limits.**

**Call City Hall for more
information**

316-772-5151

City Compost Site

The city's burn/compost site is for
Sedgwick Residents Only.

Currently open 7 days a week, Dawn to dusk
or at the discretion of maintenance.

NO dumping allowed!



Camera on Location

**TREE
LIMBS**

LEAVES

**YARD
DEBRIS**

Do not dump anything
other than yard debris, leaves, tree limbs...

we are in **danger** of losing our permit;
resulting in the loss of our dump site.



**Water Leak Emergency
after 5pm
or weekends...
phone 772-5433**



Sedgwick Historical Society

Schedule of Meetings

Regular Meetings

2nd Tuesdays

Next Meeting

Tuesday, February 9th, 7:00 pm

at Depot

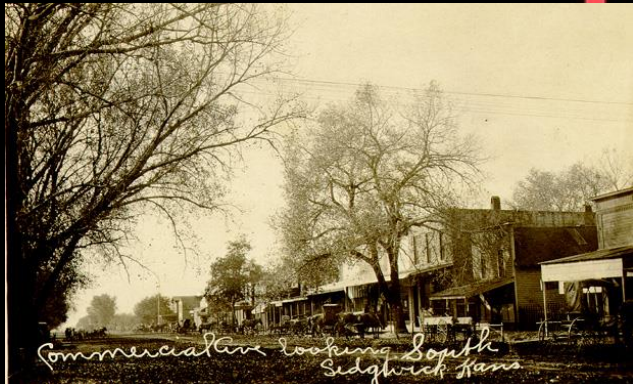
Needing volunteers!!

Bring volunteer applications to:

520 North Commercial

Sedgwick, KS

(316)772-5151



Sedgwick Historical Society
Help fund the Depot/Museum!

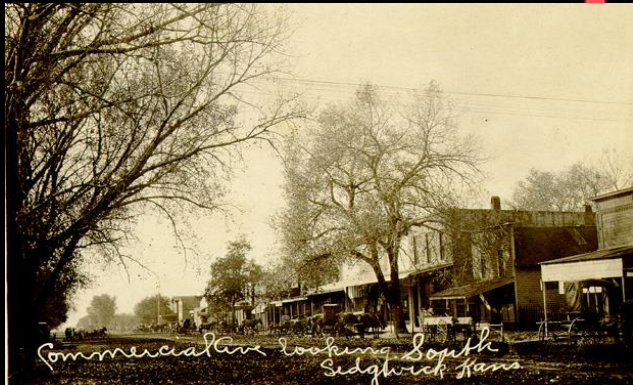
Purchase Engraved Bricks

**For placement in the sidewalk
in front of the museum!!**

Order: <https://polargraving.com/sedgwickhistoricalsociety>

Questions: contact Rod Milne at rodmilne@Hotmail.com

**All proceeds will benefit the brick
pathway and the
renovation of the
Historic Sedgwick Depot**



Spring Forward 2019

Getting ready

Tackling the tracks

Now the work begins!

A perfect job by all

Dear Sedgwick Business Owner/Sedgwick Citizens,

The Sedgwick Historical Society has fulfilled a decades-long dream by moving the historic Santa Fe Depot to the Sedgwick Historical Museum complex. The generous support of hundreds of past and present Sedgwick citizens has enabled the Society to place the 1880's building on a new foundation in preparation for a full restoration.

To fulfill our mission of protecting, maintaining, and sharing of Sedgwick's rich history, several more projects need to be completed at the depot and the dNovor's office. Immediate needs include hooking up electricity, upgrading wiring, installing heating and air conditioning, installing plumbing, building a patio, weatherproofing, installing steps and ramps between buildings, landscaping, and guttering. This step will amount to approximately \$30,000. Beyond immediate needs, future projects will include installing a bathroom, new roofing, and exterior painting. Our historic depot has great potential to serve as a meeting place, entertainment venue, and genealogical resource for our city.

The bricks and tiles are replacing concrete in a Memorial Walk that extends from the museum to Commercial Avenue in downtown Sedgwick. We invite you to become a recognized partner in this project by pledging at one of the levels listed below.

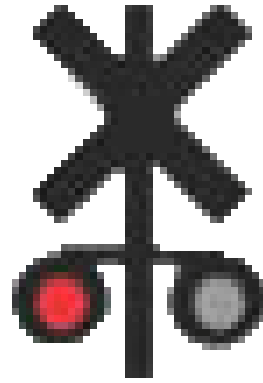
\$100 4"x8" engraved brick

\$500 12"x12" engraved Quarry Tile

\$1,000 12"x12" Quarry Tile and brass plaque displayed in the depot.

Businesses: This is a one-time advertising investment that will last for centuries!

Order your brick or tile online at: polarengraving.com/sedgwickhistoricalsociety Or, by mailing the accompanying order blank and check to: Sedgwick Historical Society, P.O. Box 360, Sedgwick, Ks 67135

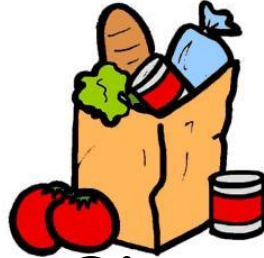


REPORT RR EMERGENCIES TO BNSF

CALL 800-832-5452

To report a blocked crossing, vehicle stalled on a crossing or to report false activation of crossing gates and lights, call 800-832-5452 immediately.

FOOD PANTRY



**First Christian Church of Sedgwick
514 N. Franklin Ave.**

Any students or families in need.

Please call 772-0211 or stop by the church.

Enter at main doors.

Open 2nd & 4th Mondays, 1pm-4pm

Open 2nd & 4th Saturdays, 10am-1pm





**Sedgwick's Lillian Tear Library
Needs your support!
Please consider a donation
toward your community Library.**

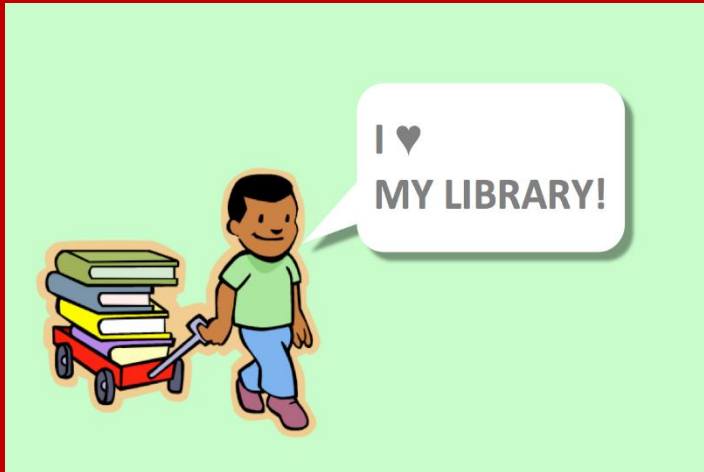
**Open normal
hours...if you
prefer, you may call
to request book and
then, pick up.
772-5727**

Help Our Lillian Tear Library

Sign Up for a



**Ages 6
and up!**



**Our Library receives
Money from the State
On the number of
Library Cards issued!**



Rise and Shine!

**Join us on Tuesday Mornings for
Breakfast**

**Sedgwick Senior Center
107 W. 5th!**

Doors open at 7:30AM to 8:30AM or until gone.

Bring your family or grab a bite before you head to work.

Menu changes every Tuesday!

(subject to change)

CANCELLED FOR NOW!

Sedgwick Senior Center Friendship Meal Program

PICKUP ONLY

DUE TO CORONAVIRUS

11:30am-noon

Monday-Friday

Site Manager—Dan Hartman

**Applications to receive meals are
available at the Senior Center**

See newsletter for meal calendar

**107 W. 5th, Sedgwick, KS
(316)772-0393**



Sedgwick Senior Center

WEEKLY ACTIVITIES

All activities cancelled
except lunch pickup/delivery.





Planning Commission/BZA

**Planning commission/BZA
Meeting is
Tuesday, February 9th,
7pm**

To report Dogs At-large, Abused or Aggressive Animals



Call 911: Animal Control



Recreation Commission

We Need Volunteers~Sign Up Today!

Nikki Camfield

316-213-6456

Courtney Stueve

316-519-0613

Benny Tolin

316-231-7854

Josh Thieme

316-650-8459

**For information on Recreation Center Activities,
please contact us by email:**

sedgwickrec@gmail.com

or visit our Facebook page:

Sedgwick Recreation Commission

Sedgwick Local Churches

First Christian Church
of Sedgwick

514 N. Franklin Ave.

United Methodist Church
600 N. Commercial Ave.

Sedgwick
Mennonite Church
400 E. 4th Street

Plymouth

Congregational Church
402 N. Commercial Ave.